

WinTV-HVR-1150

Quick Installation Guide

QI-WINTV-HVR1150-v3B · 1/12/2010 © Hauppauge Computer Works, Inc. 2010

Hauppauge Computer Works, Inc.
91 Cabot Court
Hauppauge, NY 11788

Telephone: 631-434-1600
Fax: 631-434-3198
Tech Support: 631-434-3197
techsupport@hauppauge.com

Sales: sales@hauppauge.com Web site: www.hauppauge.com

1. Contents of the WinTV-HVR-1150 package

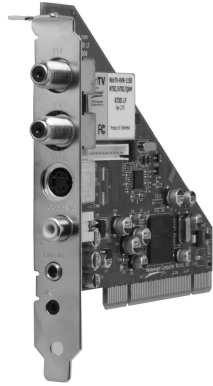
- **WinTV-HVR-1150 board**
- **WinTV-HVR Windows Installation CD-ROM** with WinTV v7 application with SoftPVR™ and TV Scheduler

For the standard WinTV-HVR-1150 products, you will find:

- **Hauppauge remote control transmitter** with 2 AAA batteries
- **Remote control receiver cable**

For Windows Media Center kits, you will find:

- **Media Center Remote Control transmitter** and two AA batteries
- **Media Center Remote control receiver/blaster**
- **IR transmitter cable** (blaster cable)
- **USB cable** for the Media Center remote control receiver/blaster box



2. What is ATSC digital TV?

WinTV-HVR-1150 has a built-in tuner for analog cable TV, digital ATSC and digital clear QAM TV.

ATSC digital TV is over-the-air digital TV for North America. ATSC digital TV typically requires an antenna for reception, and is currently broadcast in 200 cities, with over 1500 TV stations. To receive ATSC, you will need an antenna. To receive digital clear QAM or analog cable TV, you will need a cable TV connection.

Note: ATSC digital TV is NOT digital cable TV or digital satellite TV. The WinTV-HVR can receive clear QAM digital cable TV (if you are using WinTV v7 or Windows Media Center with Windows 7 or TV Pack 2008), but it cannot receive digital satellite TV unless WinTV-HVR-1150 is connected to a satellite TV set top box.

ATSC digital TV is transmitted in several resolutions, from "standard definition" which is similar to cable TV, up to high definition which has about 16 times the resolution of normal cable TV. In any resolution, ATSC digital TV gives sharper pictures than analog cable TV and near CD quality sound.

Clear QAM TV channels are digital cable TV channels which are broadcast "in the clear". These digital cable TV channels are broadcast in various resolutions, from standard definition up to high definition.

WinTV-HVR uses your PC or laptop's CPU for displaying TV programs on your PC screen. The decoding of high definition ATSC is very processor intensive, and the smoothness of high definition TV programs depends upon how fast your PC or laptop system is. Other PC activities that consume CPU resources might affect the display of ATSC digital TV. Slow video, jerky video and momentary pausing of video are all results of a CPU which is temporarily being used by other activities.

For the best ATSC digital TV reception, a roof top 'Wideband' or 'High gain' antenna is recommended. In the U.S., a good ATSC digital antenna selector can be found at TitanTV.com under **Resources**.

3. Installing the WinTV-HVR-1150 board

To install, switch off the computer and remove the computer cover. The manufacturer of your PC supplies instructions on removing the PC cover.

Note: Your PC could be damaged by electrostatic discharge. Avoid this by contacting the earthed chassis of your PC, before you open it or touch the pci card.

- **Locate a free PCI slot.** Unscrew and remove the metacover plate which covers the back of the empty slot.
- **Plug the WinTV-HVR-1150 board into the PCI slot,** and screw the WinTV-HVR-1150 metal cover plate to the PC.
- **Replace the computer cover.**

4. Connecting the cables

TV connector: either cable TV for analog and clear QAM digital or a TV antenna for ATSC TV.

Note: clear QAM digital cable TV is only available in some areas and through some cable TV operators. Contact your local cable TV company to see if they support clear QAM digital cable TV. To watch clear QAM digital cable TV, you need to be using Windows Media Center in Windows 7 or Hauppauge's WinTV v7.

Remote control receiver connector: plug in the Hauppauge Remote Control receiver cable (available on some models).

If you are using an external audio/video source like a satellite or cable TV set top box ...

then you will need to connect the **S-Video input connector** or **Composite video input connector** for video and the **Audio input (Line-In)** for the sound.

S-Video: S-Video input connector.

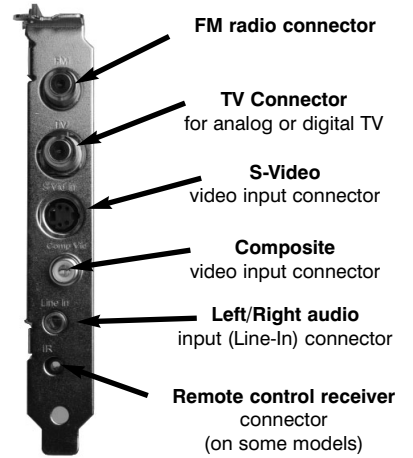
Composite: Composite (yellow) input connector.

Left/right audio input: Stereo audio input using 1/8" mini stereo jack, from the audio output of your source.

Connecting the remote control receiver cable

Plug the remote control receiver cable into the Remote control receiver connector on the WinTV-HVR-1150.

Position the round receiver sensor (at the end of the remote control receiver cable) where it can be "seen" by the remote control transmitter. This is normally at the front of your PC.



5. Installing the WinTV driver and applications

For Windows XP installations:

After you install your WinTV device and boot Windows, a 'Found New Hardware' wizard will appear.

Please cancel it and allow windows to load fully before proceeding. You might see this message two or three times. Please click 'Cancel' each time you see the New Hardware Wizard.

For Windows 7:

Insert the WinTV Installation CD-ROM in your PC's CD-ROM drive. You will see an AutoPlay message.

Click Run Setup.exe

For all versions of Windows:

Insert the WinTV Installation CD-ROM in your PC's CD-ROM drive.

The "Hauppauge WinTV Installation CD-ROM" window will appear on the screen.

Install the WinTV driver

Click the button labeled **Step 1: Install drivers.**

A blue screen will open and begin installing the drivers for your WinTV.

Once the drivers have installed, click on the **Finish** bar to exit.

Install the WinTV applications

Click the button labeled **Step 2: Install WinTV**

The setup application will then open and begin automatically installing the WinTV application components.

Once complete, click **OK** then **Exit**.

Note: the latest driver updates are available at: www.hauppauge.com

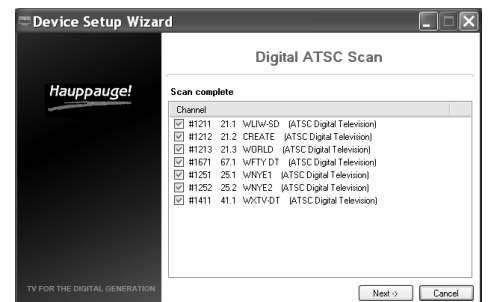


Setup menu, click **Next**. You will see the **Digital ATSC Scan** scanning for digital over-the-air channels.

The digital TV scanning process will scan from channels 2 to 51. As TV channels are found, they will appear in the Channel box.

When complete, click **Next / Next** and **OK**.

Note: if you do not receive any ATSC digital TV channels, an antenna signal booster might be needed. After adding a signal booster, see below for instructions on rescanning and the Troubleshooting section for information on choosing an antenna.

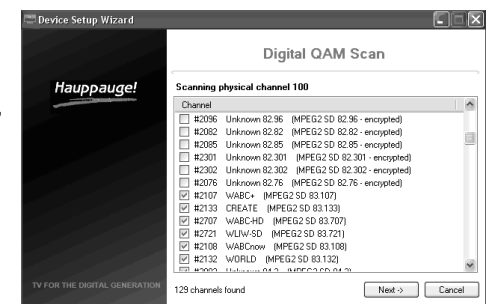


Clear QAM Digital Cable TV

Clear QAM digital cable TV channels are those TV channels broadcast on a digital cable network which are unencrypted ('free to view'). If you have a cable operator who transmits clear QAM digital TV programs, chose Digital QAM and Next.

Encrypted channels are automatically not selected. The resulting channels in the list might be both standard and high definition channels.

Note: Windows Media Center requires TV Pack 2008 or Windows 7 to support QAM TV channels. You can also use the Hauppauge WinTV v7 application, or SageTV or BeyondTV for QAM TV reception.



Analog cable TV

Select your **Country** and **TV Source** from the drop down list. To automatically scan for channels, click **Next** to continue.

Click the **Scan** button and WinTV will automatically scan for analog channels. The scanning process takes about 10 minutes.

External audio/video sources

You can bring video into the WinTV from an external audio/video source such as a cable TV or satellite set top box.

In the **Device Setup Wizard**, select **External Inputs** and click **Next**.

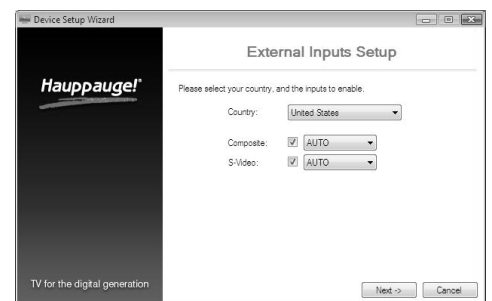
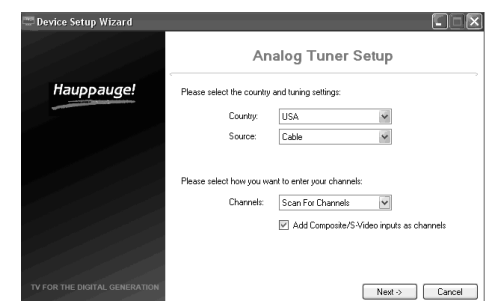
You will be presented with the option to add a **Composite** and an **S-Video** input. Please select your country (if not correct) and click **Next**.

If you wish to connect a source not normally designed for operation in your country, you can configure the Video Format manually from the drop down list. Change the value from "AUTO".

Note: Pal BGHIDK is the commonly used format in Europe. NTSC is the broadcast format used in North America.

Rescanning TV channels

If you want to rescan for TV channels, click the **Setup** menu (the gear button in the lower left corner of WinTV



6. Running WinTV for the first time

To run the WinTV v7 application for watching TV, recording videos and playing them back on your PC, double click on the WinTV icon on your Windows desk top.

Device Setup Wizard

When you run WinTV for the first time, the WinTV Device Setup Wizard appears. Select the TV source that you are using. On some model WinTVs, you have multiple tuners and therefore you can select multiple sources. For the WinTV-HVR-1150, you can choose either ATSC or Digital QAM and Analog TV. You cannot choose both Digital ATSC and Digital QAM.

Note: If you'd like to use the A/V inputs, please select **External inputs (Composite/S-Video)**.

ATSC digital over-the-air TV

Select **Digital ATSC** and click **Next**. In the ATSC

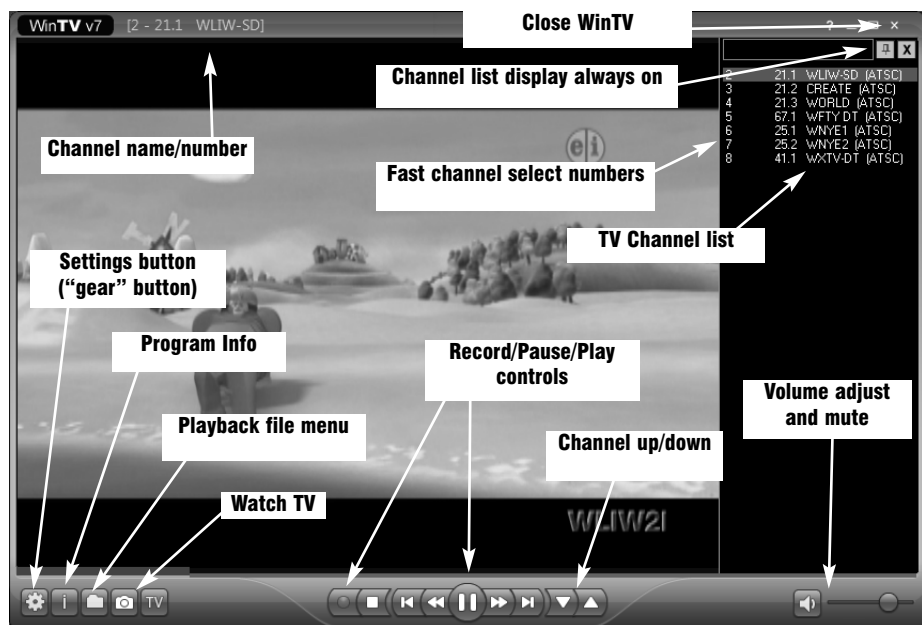


v7). Then click on the **Devices** tab. Choose your WinTV device by clicking on it, then click **Tuner setup**. Choose the TV format you want to scan, then click **Next**. Click **Next** and a new scan will be started. When the scan is complete, click **Next / Next** and **OK**.

Using the WinTV v7 application

To watch TV, click the **Watch TV** button.

To see the **TV Channel list**, click your **right mouse button** in the TV window to display the **Options menu**. Select **Find Channel**. You will see the channel list.



To display the channel list all the time, while the channel list is displayed, click the **Channel list display always on** button.

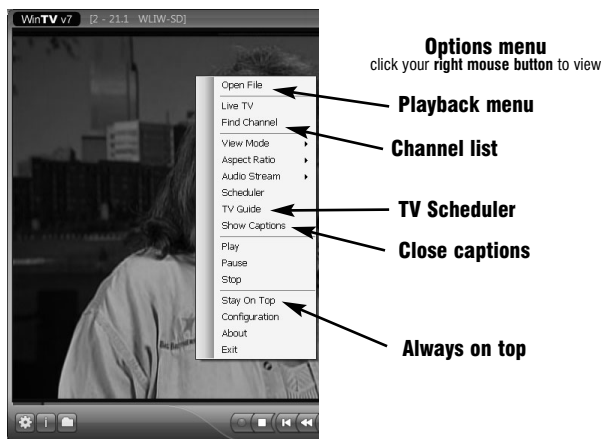
Options menu

The **Options menu** is the main menu where you can select channels, turn on closed captions, open the TV Scheduler and many other of the most important TV control functions.

To bring up the Options Menu, click your **right mouse button once** in the TV window.

To see the channel list, click on **Find channel**. You will see the list of channels which have been scanned.

To show the Channel menu as part of the TV window, click the **Channel list always on** icon at the top of the channel list.



TV Scheduler

WinTV v7's built-in TV Scheduler allows you to schedule the recording of TV shows. Once a record event is set, WinTV v7 can be closed and the WinTV application will "wake up" at the desired time and tuned to the desired channel.

When a scheduled record event takes place, the WinTV v7 application records "in background" so that you can continue to watch your live TV program, even as the recording progresses.

The TV Scheduler can be found in the **WinTV v7 Options menu**. **Right click your mouse button in the TV window to see the Options menu**.

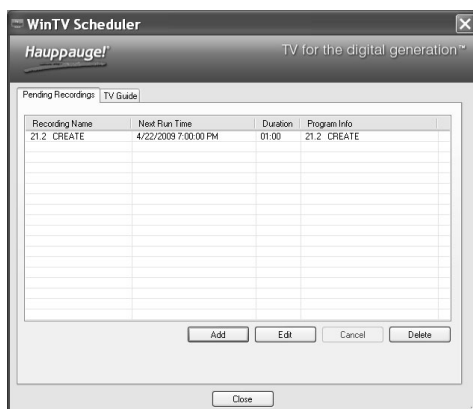
Click **Scheduler**. To set up an event for timed watching or recording, click the **Add button**.

The items that need to be set for each event are:

- **Name:** you can add a name to the recording. If you do not enter a name, the name will be in the channel/date format.
- **Channel:** chose one of your scanned channels.
- **Start time:** set to the desired start time. Click on the hour to set the hour, the minute to set the minute. Note: It takes about 15 seconds to launch the WinTV and start recording.
- **Duration:** number of minutes in the recorded program.
- **Recurrence:** one time, daily, weekly. Note: If you set for Record Weekly, you must also specify the Day of the Week for the recording.
- **Date to Begin Program:** today's date is the default. Change this if you want to schedule on another date.
- **Source selection:** leave set at WinTV to bring up the WinTV at the requested time and on the requested channel.

Once these are set, click **OK**. You can add more recordings, clicking **OK** after each event is set.

When you are finished click **Close**. The WinTV program does not have to be running for the Scheduler to work. If WinTV is not running, it takes about 15 seconds to start WinTV and to start the recording of TV.



To turn on Closed captions, click on **Show Captions**.

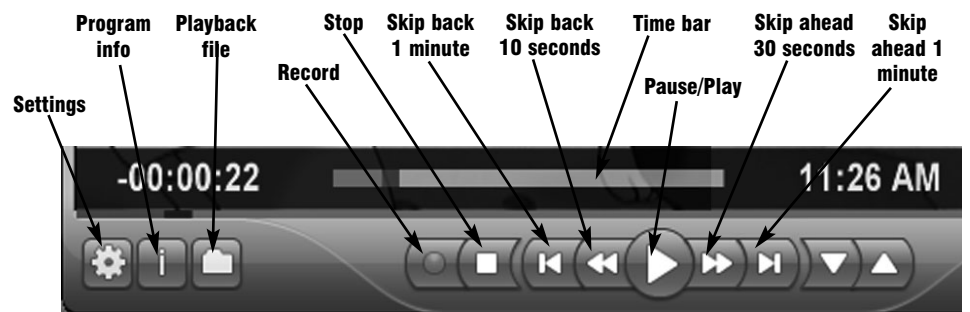
To manually schedule a TV recording, or to see which programs have been scheduled, click on **Scheduler**.

To turn on the **Always on Top** mode, click on **Stay on Top**.

Watch, Pause and Record TV

WinTV v7 is always recording video to your PC's hard drive while TV is being displayed. In this way, you can immediately skip back and replay the TV program you are watching.

Clicking on the **Pause button** will cause the video to pause, while clicking the **Record button** will cause the current TV program to be recorded to hard disk.



Recording your TV shows

If you want to record a TV show you are watching:

- Click the **Record button**. The recorded file name will pop up on the video for a few seconds as the recording starts.
- When you are finished recording, click the **Stop button**.
- Click the **Playback file** button and select the last file recorded to play the video you just recorded
- To play a video you recorded earlier, click the **Playback File** button and then move your mouse and click once on the video you want to play. Click **Open** and the file will start playing.

The recorded video file is saved in the directory set in **Recordings directory**. The default directory is **MyVideos**. To change this directory, click the **Settings** button and then the **Folders** tab. Every time you record a file, a new file is automatically created. The file will be formatted as (ChannelNumber)_(ChannelName)YearMonthDay_Time.

For digital TV programs, the quality level recorded is the same as it is transmitted by the TV station. For example, if the TV station is transmitting a high-definition program, WinTV will record the program in high-definition.

Close captions, parental control information and SAP audio is recorded with digital TV programs.

For analog cable TV using the built-in hardware MPEG-2 encoder, the quality of the video recording is set to 6Mbps/sec. This will be a configurable setting in a future version of WinTV v7.

If you want to pause a TV show you are watching:

- Click the **Pause** button. Your TV video will stop and the Time counter will start counting.
- To start the video from where you paused, click the **Play** button
- To rewind the video to the beginning, click the **Skip to the beginning** button. If your video was paused, click the **Play** button.
- To rewind the video 1 minute, click the **Skip back 1 minute** button. If your video was paused, click the **Play** button.

The Delay counter displays how much time you are behind the live video. For example, if the delay counter says 00:01:23, then the video window is showing video 1 minute and 23 seconds behind live video.

a noisy TV picture indicate system performance problems.

Jerky video with live ATSC digital TV

Jerky or distorted video can be caused by two things in your PC or laptop: a slow CPU which cannot decode the ATSC TV signal fast enough, and a graphics system which cannot keep up with the high datarates of ATSC TV.

Many times, improving the performance of the graphics display will fix the jerky video display of ATSC digital TV. Here are some tips on improving graphics performance:

- Use the latest graphics driver: graphics drivers are often 'tweaked' to improve performance, especially the built-in graphics on laptops. Check the Microsoft Windows update site to download the latest graphics driver for your computer. For Dell computers, check the Dell website for the latest graphics driver.

- Use WinTV v7 Video Renderer settings to optimize graphics performance: The Video Renderer is found in the General tab of WinTV v7, and is used to change the display mode of a graphics card for TV watching. This setting does not affect any other Windows program.

The default mode is EVR. The other modes are VMR9, VMR7 and Overlay. Each mode uses a different process to render video. Try each mode and use the one which gives you the best results.

To use hardware graphics acceleration, put a check in the tick box Use hardware acceleration when possible. This will allow your graphics system to use hardware acceleration for video decode. Note: graphics hardware acceleration does not work on all systems.

If this setting does not help, or if you experience WinTV not responding after a channel change, then your graphics system cannot use hardware graphics acceleration. In this case go back to settings and uncheck "use hardware acceleration" and rerun WinTV.

Only some channels are found during ATSC channel scan

If you are only receiving some known TV channels when scanning, it means your TV antenna is not adequate to pick up the channel. You will need either an antenna signal booster (a Radio Shack antenna amplifier will work) or a high gain antenna. Here's a link to an ATSC antenna selector:

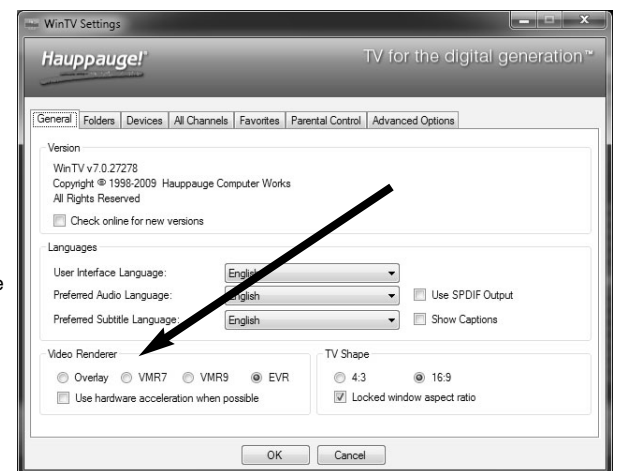
<http://www.antennaweb.org/aw/address.aspx>

Black window when selecting an ATSC channel

A black window when selecting an ATSC channel means that the WinTV-HVR-850 is not getting a signal. This is most often due to poor reception. See "Only some channels are found during ATSC channel scan" above.

Uninstalling the WinTV driver and applications

Run the hwcLEAR.exe from the installation CD. Select OK A black screen will briefly appear and once it has disappeared the software will be removed. If you now re-start the computer you will be at Step 4 of the installation.



Troubleshooting

Note: the latest WinTV-HVR-1150 software can be found at http://www.hauppauge.com/site/support/support_hvr1150.html

Some notes on system compatibility

Decoding high definition ATSC TV is very CPU intensive. A graphics card with at least 64MBytes of memory and the latest graphics driver from the manufacturer makes the decoding task easier. Typically a 2.2 GHz Pentium 4 processor or equivalent with a graphics card having 64MBytes of memory is required to properly decode ATSC digital TV on your PC. A 1.6GHz AMD Sempro laptop computer tested in the Hauppauge lab used 50% of the CPU for playing ATSC 640i format, and 90% of the CPU when playing ATSC 1080i, the highest definition ATSC format.

In some cases, either a faster processor or more graphics memory might be required. Slow or jerky video and