

the supplied **USB cable** into the **Media Center remote control receiver/blaster box** and the other end it into any USB port on your Vista Home Premium or Windows XP Media Center PC. Media Center will automatically load the drivers for the MCE remote control. This will take one or two minutes.

To test the receiver, click the **Start button** in the middle of the remote control. Media Center should open.

If you have a satellite set top box and would like the Media Center remote control receiver/blaster to change channels on the set top box, plug one end of the **IR transmitter cable** into the back of the **Media Center remote control receiver/blaster** and position the other end (the transmitter end) over the **IR receiver** on your set top box. Then run the **TV Tuner Set up under Media Center** (see below).

Step 4. TV Tuner set up under Media Center

To set up the TV tuner in Windows XP Media Center:

in the main Media Center menu go to **Settings / TV / Set up TV Signal**.

To set up the TV tuner in Vista's Media Center application:

go to **Tasks / Settings / TV / Set up TV signal**.

You will see a message: **Set Up Your TV Signal**. Click **Next**.

In **Confirm your Region**, make sure your region is selected. Click **Next**.

You will see **Automatic TV Signal Setup**. We recommend selecting

Configure my TV signal automatically. Click **Next**.

Note: *at this point, Media Center will set up the TV tuner. This might take a minute or so.*

You will then see a message saying **Examining your TV signal**. Media Center is determining the type of TV connection you have. When it is finished, it will tell you whether you have a cable TV, antenna or set top box connection.

After determining the type of signal, you will see **You are Done!**

Now you need to set up the Electronic Program Guide. You will see a message: **Set Up Your Program Guide**. Click **Next**. The Program Guide Set Up Wizard will move you through the completion of the Program Guide set up.

When you are finished with the Program Guide Setup, click the **MyTV** button on your Media Center remote control to start watching TV.

Troubleshooting

Removing the WinTV-PVR driver

If you ever need to remove the WinTV-PVR driver, run **HCWClear.EXE** from the **WinTV-PVR MCE Driver Installation CD-ROM**.

WinTV Media Center Kit Quick Installation Guide

WinTV-HVR-1600 MCE-Kit

© Hauppauge Computer Works, Inc. 2005-2007

Hauppauge Computer Works, Inc.

techsupport@hauppauge.com

Hauppauge Computer Works, GmbH

info@hauppauge.de

Hauppauge Computer Works, Ltd

support@hauppauge.co.uk

www.hauppauge.com

Included with the WinTV Media Center Kits:

- **WinTV-HVR-1600 PCI board** with NTSC and ATSC tuners, MPEG-2 hardware audio/video compressor for NTSC TV and one FM radio receiver.
- **WinTV Installation CD-ROM** for use with Windows XP and Windows Vista (all versions)
- **WinTV for Media Center Quick Installation Guide** (this guide) for use with Vista Home Premium and Ultimate, and Windows XP Media Center Edition
- **WinTV-HVR-1600 Personal Video Recorder Quick Installation Guide** for use with Windows XP and Vista Home Basic
- **Media Center Remote control transmitter** and two AA batteries
- **Media Center remote control receiver/blaster box**
- **USB cable**
- **IR transmitter cable**

Installing the WinTV-HVR-1600 MCE Kit for use with Media Center

The **WinTV-HVR-1600 for Media Center** boards differ from the non-MCE version in that it uses the **Microsoft Media Center USB Remote control and IR transmitter** instead of the WinTV-HVR-1600's built-in IR receiver transmitter.

The WinTV-HVR-1600 MCE-Kit will work with Microsoft's Media Center application in **Vista Home Premium** or **Ultimate**.

If you have Windows **Vista Home Basic**, you can still use the WinTV-HVR-1600 to watch and record TV, but you will use Hauppauge's WinTV application instead of Microsoft's Media Center application. See the **WinTV-HVR-1600 Quick Installation Guide** for instructions on installing and using the WinTV application. **Note:** The Media Center remote control has limited functionality with Hauppauge's WinTV application.

Installation overview

- Step 1.** Install the **WinTV-HVR** in your PC and connect the TV and A/V cables.
- Step 2.** After starting Windows, install the **WinTV-HVR device driver** from the **WinTV Installation CD-ROM**.
- Step 3.** Install the **Media Center remote control**.
- Step 4.** Set up the **TV tuner** in the Media Center application.

Detailed installation instructions

Step 1: Install the WinTV-HVR-1600 board in your Media Center PC and connect the cables

Turn the power off on your PC. Install the **WinTV-HVR-1600** into a PCI slot. On some PC's, the **WinTV** needs to be plugged into the first or second PCI slot.

Plug your TV antenna or cable TV cable into the **TV Connector**. Skip to step 2.

If you are using a cable TV or satellite TV set top box, connect it to the WinTV-HVR-1600 through either S-Video or Composite connector on the WinTV board, or connect a coax cable from the **RF Out** on your set top box to the **TV input** on the WinTV board. Media Center will automatically detect which method you are using to connect the WinTV to the set top box.

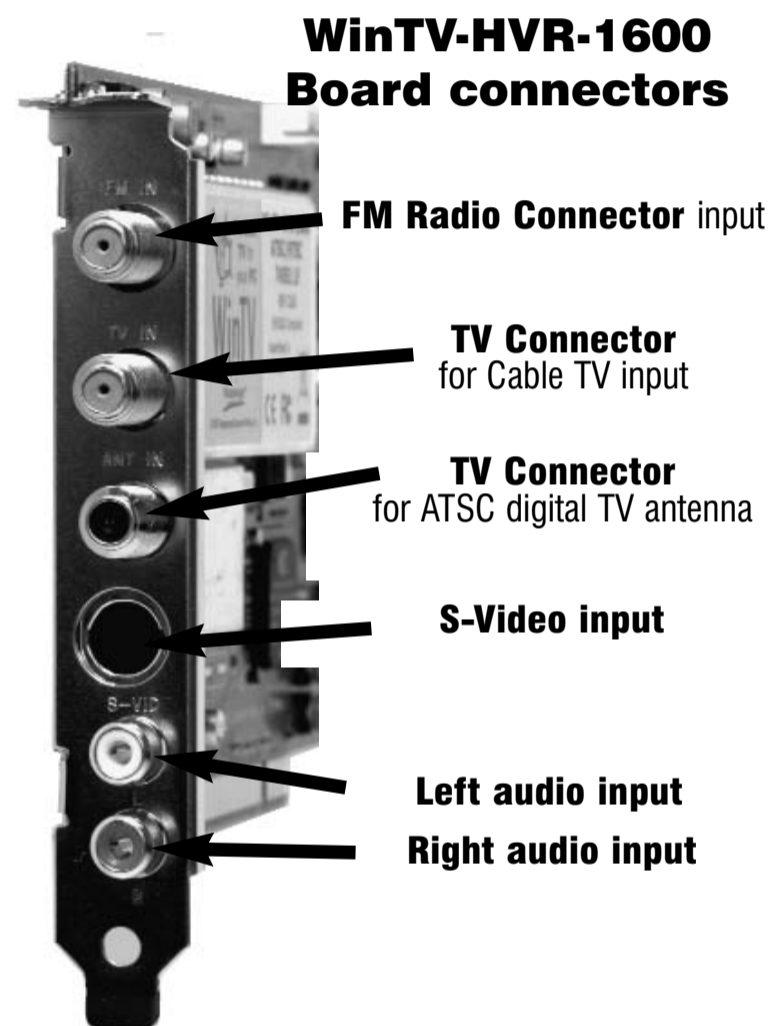
Audio and video from an external A/V device (satellite TV receiver, cable TV box, VCR, camcorder, camera, DVD player) can be brought into the WinTV-PVR via the back panel connectors. If your A/V device uses S-Video, connect to the **S-Video input** on the WinTV board. If your video device uses composite video instead of S-Video, use the **yellow RCA jack**. Audio input from an external A/V device can be brought into the WinTV board via the **white and red audio input jacks**.

Step 2: Installing the WinTV-HVR-1600 Windows driver

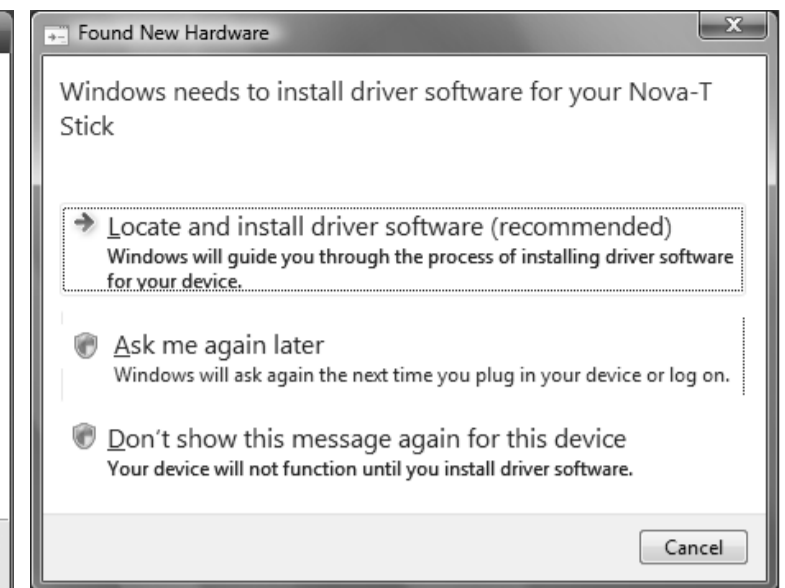
After installing the **WinTV-HVR-1600** in your PC, boot Windows. The **Found New Hardware Wizard** will appear. Insert the **WinTV-PVR MCE Driver Installation CD-ROM** in your PC's CD-ROM drive.

In Windows XP, select **No, not at this time** and click **Next**.

Make sure **Install the software automatically (Recommended)** is checked. Click **Next**. Click **Finish**.



Found new hardware in Windows XP



Found new hardware in Vista

In Vista, click **Locate and install driver software (recommended)**. Then click **Don't search on-line**. Click **Next**. When the driver is installed, click **Close**.

Step 3. Install the Media Center Remote control receiver/blaster

The **Media Center remote control receiver/blaster box** is a small USB device which both receives remote control commands and transmits commands via its **IR Blaster** to change channels on a cable TV or satellite set top box.

To install the Media Center remote control receiver/blaster, simply plug one end of

