

To test the receiver, click the **Start button** in the middle of the remote control. Media Center should open.

If you have a satellite or cable TV set top box ...

and would like the Media Center remote control receiver/blaster to change channels on the set top box, plug one end of the **IR transmitter cable** into the back of the **Media Center remote control receiver/blaster** and position the other end (the transmitter end) over the **IR receiver** on your set top box. Then run the **TV Tuner Set up under Media Center** (see below).

Step 4. TV Tuner set up under Vista Media Center

Run the **Windows Media Center application** by clicking on the icon which is on your Windows background.

Cursor down to **Tasks**. Cursor left to **Settings**. Click **enter**.

Cursor down to **TV**. Click **enter**.

Cursor down to **Set up TV Signal**. Click **enter**.

Click **Next**.

In **Confirm your Region**, make sure your region is selected. Click **Next**.

You will see a message which says **Download TV Setup options**. This takes about 5 minutes to complete.

Click **Next** when this download is complete.

At **TV Signal**, click '**I will configure my TV signal manually**' and click **Next**

You will then see: **Cable / Satellite / Antenna**. Chose the source of your TV signal (Cable for use with analog cable TV) and click **Next**.

Note: at this point, Media Center will set up the TV tuner. This might take a minute or so.

Note: Vista Media Center does not currently support QAM TV channels. For QAM TV reception, you need to use either the Hauppauge WinTV v6 application, or SageTV or BeyondTV.

You will then see a message saying **Examining your TV signal**. Media Center is determining the type of TV connection you have. When it is finished, it will tell you whether you have a cable TV, antenna or set top box connection.

After determining the type of signal, you will see **You are Done!**

Click through the rest of the settings, set up your **Guide listings** and click **Finish**.

Then return to the main menu. Go to **TV + Movies** and then **live TV** to watch and record TV.

Removing the WinTV driver

If you ever need to remove the WinTV-PVR driver, run **HCWClean.EXE** from the **WinTV-HVR MCE Driver Installation CD-ROM**. You'll need to run as Admin.

WinTV Media Center Kit Quick Installation Guide

WinTV-HVR-1800 MC-Kit

© Hauppauge Computer Works, Inc. 2007

Hauppauge Computer Works, Inc.

techsupport@hauppauge.com

Hauppauge Computer Works, GmbH

info@hauppauge.de

Hauppauge Computer Works, Ltd

support@hauppauge.co.uk

www.hauppauge.com

Included with the WinTV Media Center Kits:

- **WinTV-HVR-1800 PCI Express X1 board** with dual NTSC and ATSC/QAM tuners, MPEG-2 hardware audio/video compressor for NTSC TV and FM radio receiver.
- **WinTV Installation CD-ROM** for use with Windows Vista (all versions)
- **WinTV-HVR-1800 MC-Kit Quick Installation Guide** (this guide) for use with Vista Home Premium and Ultimate
- **WinTV-HVR-1800 Quick Installation Guide** for use with Windows XP and Vista Home Basic
- **Media Center Remote control transmitter** and two AA batteries
- **Media Center remote control receiver/blaster box**
- **USB cable**
- **IR transmitter cable**

Installing the WinTV-HVR-1800 MC-Kit for use with Media Center

The WinTV-HVR-1800 MCE-Kit will work with Microsoft's **Media Center application** in **Vista Home Premium** or **Ultimate**.

If you have Windows **Vista Home Basic** or **Windows XP**, you can still use the WinTV-HVR-1800 to watch and record TV, but you will use Hauppauge's **WinTV v6** application instead of Microsoft's Media Center application. See the **WinTV-HVR-1800 Quick Installation Guide** for instructions on installing and using the WinTV application.

Note: The Media Center remote control has limited functionality with Hauppauge's WinTV application.

Installation overview for use with Windows Media Center in Vista Home Premium and Ultimate

- Step 1.** Install the **WinTV-HVR** in your PC and connect the TV and A/V cables.
- Step 2.** After starting Windows, install the **WinTV-HVR device driver** from the **WinTV Installation CD-ROM**.
- Step 3.** Install the **Media Center remote control**.
- Step 4.** Set up the **TV tuner** in Microsoft's Media Center application.

Detailed installation instructions

Step 1: Install the WinTV-HVR-1800 board in your Media Center PC and connect the cables

Turn the power off on your PC. Install the **WinTV-HVR-1800** into a PCI Express slot.

Plug your TV antenna or cable TV cable into the **TV Connector**. Skip to step 2.

If you are using a cable TV or satellite TV set top box, connect it to the WinTV-HVR-1800 through either S-Video or Composite connector on the WinTV board, or connect a coax cable from the **RF Out** on your set top box to the **TV input** on the WinTV board. Media Center will automatically detect which method you are using to connect the WinTV to the set top box.

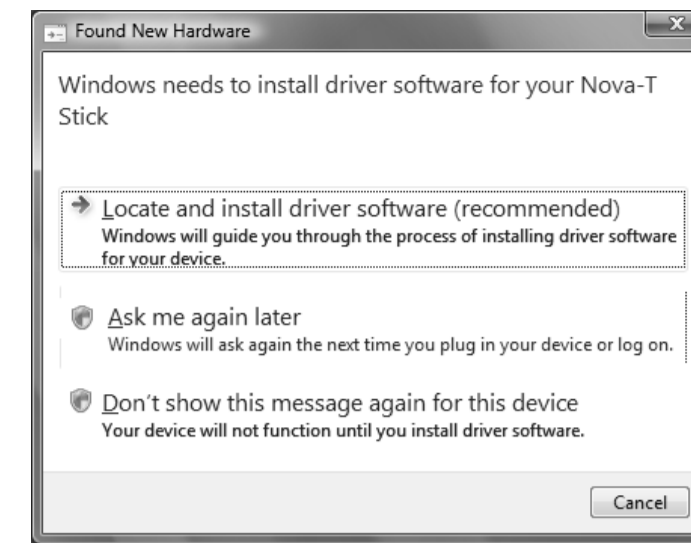
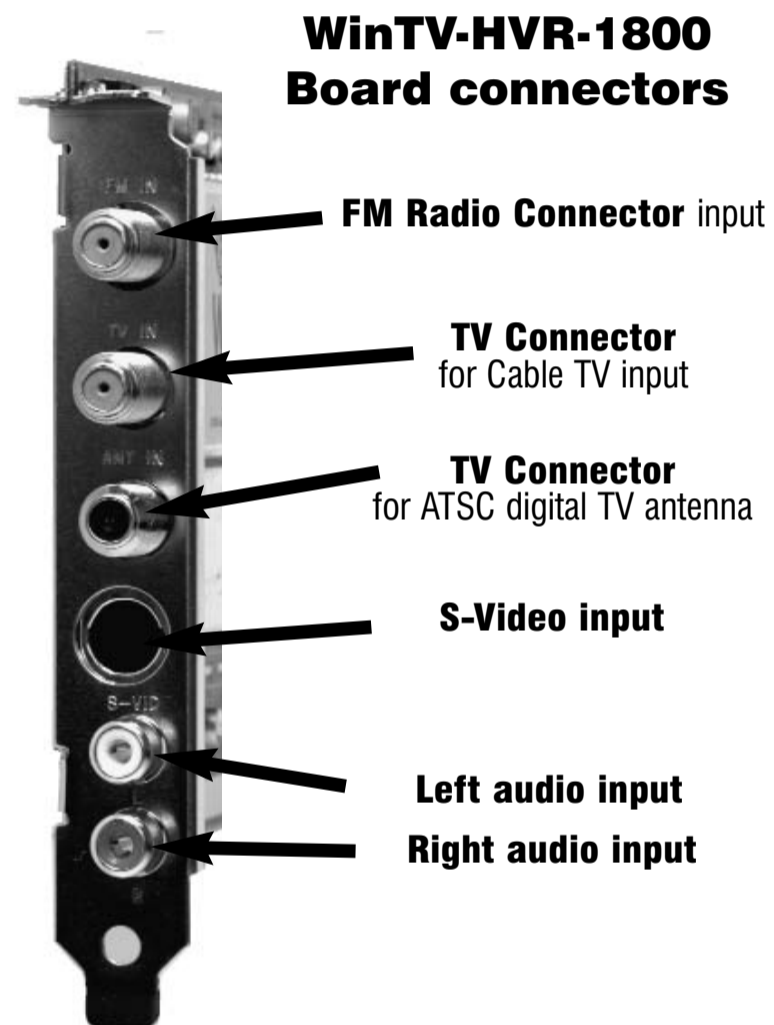
Audio and video from an external A/V device (satellite TV receiver or cable TV box) can be brought into the WinTV-HVR-1800 via the back panel connectors. If your A/V device uses S-Video, connect to the **S-Video input** on the WinTV board. If your video device uses composite video instead of S-Video, use the **yellow RCA jack**.

Audio input from an external A/V device can be brought into the WinTV board via the **white and red audio input jacks**.

Step 2: Installing the WinTV-HVR-1800 Windows Vista driver

After installing the **WinTV-HVR-1800** in your PC, boot Windows. The **Found New Hardware Wizard** will appear. Insert the **WinTV Installation CD-ROM** in your PC's CD-ROM drive.

Click **Locate and install driver software (recommended)**. Then click **Don't search online**. Click **Next**. When the driver is installed, click **Close**.



Step 3. Install the Media Center Remote control receiver/blaster

The **Media Center remote control receiver/blaster box** is a small USB device which both receives remote control commands and transmits commands via its **IR Blaster** to change channels on a cable TV or satellite set top box.

To install the Media Center remote control receiver/blaster, simply plug one end of the supplied **USB cable** into the **Media Center remote control receiver/blaster box** and the other end it into any USB port on your Vista Home Premium or Ultimate Media Center PC. Media Center will automatically load the drivers for the MCE remote control. This will take one or two minutes.

